

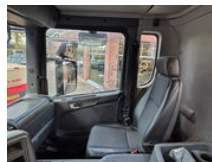
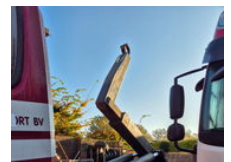
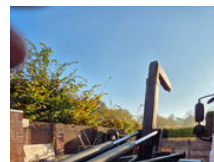


BEKKERS TRUCKS

Scania P 420 8x2..... manuel gearbox.

General features

Brand	Scania
Subcategory	Container
Container system	cable
Odometer reading	1.225.339km
Construction year	2008
Date of first registration	17-03-2008
Color	Red
Condition	Used
Fuel	Diesel
Emission class	Euro 5



Characteristics

Empty weight

13.060kg

Load capacity	22.940kg
GWV	36.000kg
Length	895cm
Width	255cm
Cabin	No
Cylinder contents	11.705cc

Scania P 420 8x2..... manuel gearbox.

Technical specifications

Number of axes	4
Axis configuration	8x2
Engine output	309kw

Accessories